

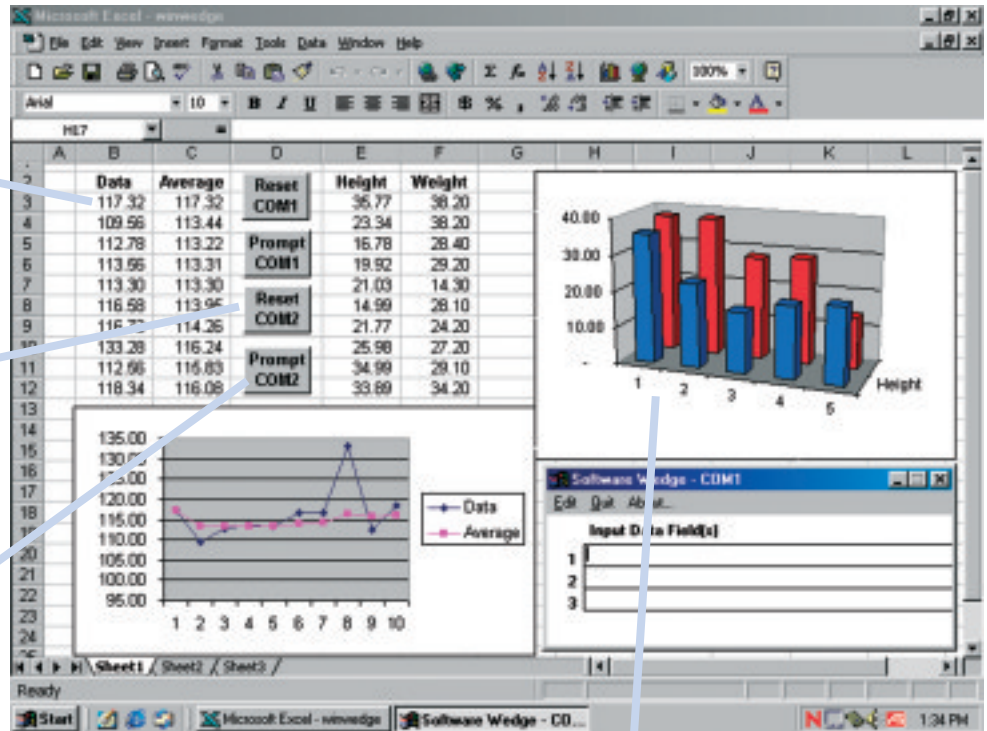
Data Collection 32 Bit Software

Software Wedge is an ingenious and inexpensive piece of software that allows the user to connect ANY gauge with an RS 232 output directly to a PC, laptop etc and send the instruments reading to such programs as spreadsheets, databases etc. Imported data can be manipulated, analysed etc on a users own software of choice.

Input serial data from any instrument directly into your application programs in real time.

Create buttons or macros in your application that perform Serial I/O functions with the Pro version.

Send out commands or data to control your instruments directly.



Create charts or graphs in your application that automatically update with real-time data from your serial devices.

SOFTWARE WEDGE

Code No	Description	Price (£)
30-1522	Software Wedge-Standard (32 Bit)	£277.00 C
30-1524	Software Wedge-Pro (32 Bit)	£530.00 C

Software Wedge for Windows

Standard version features:

- Supports all COM ports. Install on up to 32 serial ports on a PC for data collection from many devices simultaneously
- Data transfer as keystrokes directly into any other application program
- A powerful serial data analyser feature allows you to preview serial data and debug all serial communications problems
- Data filtering capabilities let you selectively filter out non-numeric characters from any field in your input data or ignore specific fields altogether

Pro version - all the features of the standard version plus:

- Extended support for 2-way I/O to give you more options for controlling serial devices
- Support up to 99 com ports simultaneously
- Support for any serial data including binary hexadecimal and octal as well as ASCII
- Thirty powerful maths and string functions including scaling, conversions, arithmetic and logical operators
- Hot key activated output strings and hot key control of all WinWedge pro features
- More advanced data filtering option

Gauge Management & Calibration Software

The inspired **QMSOFT (Quality Management Software)** system is a comprehensive, user-friendly gauge management software programme, enabling the efficient administration of a company's measuring instrument inventory, or the effective management of commercial calibration laboratory gauge throughput. Add on individual modules relating to specific gauge categories render this powerful software one of the most comprehensive and flexible currently available.

The screenshot displays the QMSOFT software interface. The main window shows a table of gauge inventory with columns for Type, Identify number, Nominal size, Status, Date of last inspection, and Date of next inspect. The table lists various types of gauges such as Caliper, Dial gauge, and Plug gauge. A detailed view of a gauge is shown on the right, displaying its nominal size (25.0000 mm / 25.1000 mm), standard (G1 / M300), and upper and lower deviations. An image of the gauge is also visible at the bottom right of the detailed view.

Type	Identify number	Nominal size	Status	Date of last inspection	Date of next inspect
Caliper	1812	150.0 mm	Usable	20/06/2006	
Dial gauge (AMI) 1/1000	DG_Am1_1200	0.0000 - 0.5000 mm	Usable	20/07/2006	
Caliper/rod	PC_1194	0.4 mm - 0.4 mm	DO NOT USE	04/10/2004	
G1 / M300 plug gauge	0815	20H7	DO NOT USE	13/02/2004	
Dial gauge (G1 standard)	0000	0.000 - 0.000 mm	DO NOT USE just calibrated		
External micrometer	129	25.00 - 50.00 mm	Stripped	21/10/2002	30/12/099
G1 / M300 snap gauge	1238	20H7	Restricted use	12/07/2006	02/01/2006
Protractor	0029_Test	0 - 25.0 mm	DO NOT USE	03/07/2002	03/07/2002
Setting plug (analogous G1 G50)	EL3_Am12	40.000 mm	Usable	13/10/2004	10/10/2004
G1 / M300 plug gauge	061_118	25.000 mm / 25.1000 mm	Usable	13/10/2004	06/12/2004
G1 / M300 plan plug gauge for minor diameter	009	ø40x1.6-7h	Usable	13/10/2004	22/12/2004
G1 / M300 thread plug gauge for steel conda	2022_Test	7g 11	Usable	13/10/2004	02/01/2006
M300 plug gauge	AL3_129	60H9	Usable	13/10/2004	05/01/2006
Internal micrometer	145_126	25.00 - 50.00 mm	Usable	22/09/2004	22/01/2006
Steel square	STW_003	200 x 270	Usable	22/09/2004	22/03/2006
G1 thread ring gauge	00002	M 12x1.75-6g	Usable	13/10/2004	10/04/2006
G1 thread ring gauge	Test_G1R_1023	M 12x1.75-6g	Stripped	05/07/2004	05/07/2006
Target tool	0896_085	100 - 1000 Nm	Usable	20/09/2004	20/09/2006
G1 / M300 thread plug gauge	0234	M 40x4.5-9H	Usable	13/10/2004	20/09/2006
M300 snap gauge	MPL_0178	40H7	Usable	13/10/2004	20/09/2006
Measuring rule	rule_3114	2000 mm	DO NOT USE	23/09/2004	23/09/2006
Knife edge	HL_1265	500.0 mm	Usable	20/09/2004	20/09/2006
Straight edge	PL_3452	500.0 mm	Usable	20/09/2004	20/09/2006
Dial gauge (G1 standard)	001221	0.000 - 0.000 mm	Usable	22/09/2004	22/09/2006
Internal micrometer	0210	0.00 - 25.00 mm	Usable	04/10/2004	04/10/2006
M300 thread ring gauge	044R_34992	M 24x4-6g	Usable	13/10/2004	05/10/2006
Dial gauge (Block Standard)	DG_170054	0 - 5 mm	Gauge being repaired	09/10/2004	09/10/2006
External micrometer	02227	25.00 - 50.00 mm	Usable	09/10/2004	09/10/2006
External micrometer with vernier scale	089	100.00 - 200.00 mm	Usable	09/10/2004	09/10/2006
Master ring acc. to BS (BS4004 / BS4305)	1481_2346	40.000 mm	Usable	13/10/2004	10/10/2006
G1 ring gauge	0098	20H7	Usable	13/10/2004	10/10/2006
Protractor	00102	360.0 Grad	Usable	13/10/2004	10/10/2006
Depth micrometer	13076	0.00 - 25.00 mm	Usable	20/09/2006	20/02/2006
G1 / M300 plug gauge acc. to AM1	104P_1188	1.0000" / 1.0000"	Usable	23/10/2006	20/01/2006

QMSOFT Main Features

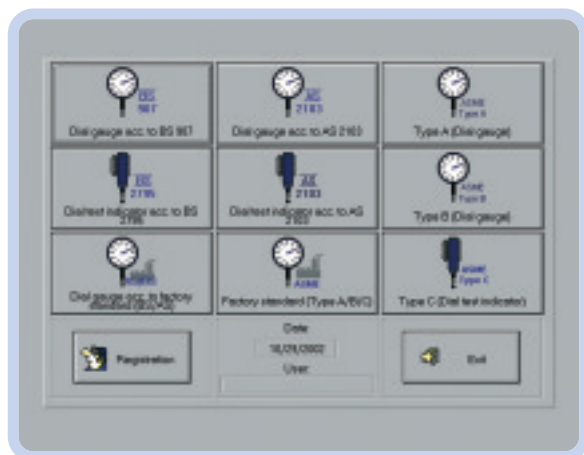
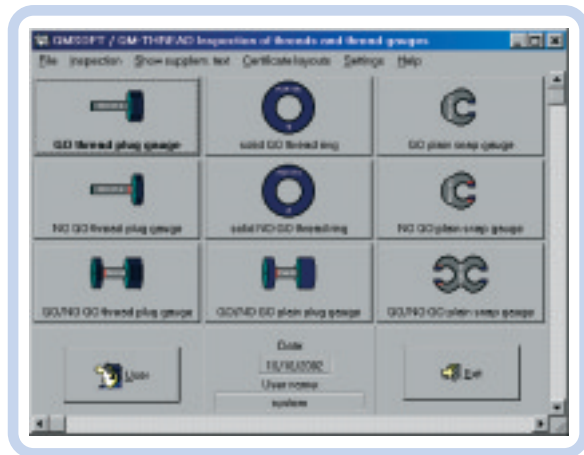
- Gauge management and gauge inspection are integrated into the system with equal importance
- Specially developed modules make possible the calibration of all common gauges using any national, international or user defined standard. It is therefore not necessary to define an inspection procedure for each gauge type
- Extensive support for directly connected measuring devices including Trimos & Sylvac calibration instruments
- All normal sizes and tolerances for gauges are calculated by the program (with relevant modules installed)
- Inspection certificates may be customised for individual presentation saved as html, doc or pdf files

QM-MANAG - The Gauge Management system

Code No 20-3250

QM-MANAG provides all the functions to manage the complete inventory of measuring tools and gauges. It also allows the creation of identification cards, search and reminder lists, as well as histories of all measuring tools and gauges.

The QMSOFT modules allow the operator to calibrate all types of measuring instruments against major international standards or to create and use more practical in-house standards for each gauge within the database. The easy to use, modular nature of QMSOFT allows the user to customise the software to match their own requirements.



QM-PLAIN - plain gauge inspection

Code No 20-3251

QM-PLAIN supports the inspection of master rings and ring gauges, plug gauges and snap gauges. Using the selected gauge type and the nominal value provided (e.g. 2H7), the program calculates the gauge tolerances.

Includes DIN and British Standards.

QM-THREAD - thread gauge inspection

Code No 20-3252

QM-THREAD calculates the expected size over wires or balls and the pitch diameter depending on the measurement method. The program calculates the nominal sizes and tolerances for varied international standards including:

- ISO metric threads BS 3643
- Unified threads to ANSI / ASME
- Pipe threads to BS 2779
- Steel Conduit threads to DIN 40431
- Trapezoidal threads to DIN 103
- Whitworth threads BS 84:1956
- Helicoil threads to BOELLHOFF standard
- Unified threads to BS 1580
- Unified Helicoil to BOELLHOFF standard
- Buttress threads to DIN 513
- MJ threads to DIN ISO 5855
- NPSM pipe threads to ANSI / ASME
- Threads for valves to DIN 7756 / ETRTO V.7
- ACME screw threads to ASME / ANSI
- STUB ACME screw threads to ASME / ANSI
- Buttress inch screw threads 7°/45° to ANSI
- Thread gauges according to factory standard
- Plus many others

QM-DIAL - dial gauge inspection

Code No 20-3255

QM-DIAL supports the inspection of dial gauges, dial indicators and dial test indicators. Standards supported include:

- Dial gauges to DIN 878
- Dial indicators to DIN 879
- Dial test indicators to DIN 227
- Dial gauges to BS 907 - 1965
- Dial indicators to BS 2795 - 1981

Additional modules include:

QM-CALIP - Code No 20-3256 - inspection of calipers

QM-MICRO - Code No 20-3258 - inspection of micrometers

QM-PINS - Code No 20-3257 - inspection of pin gauges

QM-EMP4W - Code No 20-3261 - inspection of gauge blocks

QM-RULE - Code No 20-3259 - inspection of rules

QM-TORQ - Code No 20-3249 - inspection of torque gauges

QM-TTAP - Code No 20-3248 - inspection of tapered threads