

## Trimos Tool Presetter TPR Series

The advanced **Trimos TPR Tool Presetting** range incorporates user-friendly multi-function electronics with an extremely robust shop-floor proof construction. The large digital displays and constant measuring pressure ensures rapid and accurate off-line presetting of tools in both X and Z co-ordinates. Fitted with an ISO40 Taper.



### Features

- Min / Max hold facility
- Preset function
- Counter balanced measuring carriage
- Direct RS232 output
- Rotating tool
- Other capacities available

Reducing sleeves available to suit most types of tooling.



### REDUCING SLEEVES TO SUIT TOOL PRESETTERS

Code No	Size
20-2830	ISO 50 / 45
20-2835	ISO 50 / 40
20-2840	ISO 50 / 30
20-2845	ISO 40 / 30
20-2865	ISO 50 / VDI 20
20-2870	ISO 50 / VDI 30
20-2875	ISO 50 / VDI 40
20-2880	ISO 40 / VDI 20
20-2882	ISO 40 / VDI 30
20-2884	ISO 40 / VDI 16
20-2895	Special Adaptors

### TRIMOS TOOL PRESETTER

	TPR302	TPR402	TPR602	TPR702
<b>Code No</b>	<b>20-2803</b>	<b>20-2804</b>	<b>20-2806</b>	<b>20-2807</b>
Range Z axis	300mm / 12"	400mm / 16"	600mm / 23"	700mm / 27"
Range X axis	200mm / 8" dia.	300mm / 12" dia.	300mm / 12"	300mm / 12"
Resolution (switchable)	0.01 / 0.001mm or 0.0005 / 0.00005"	0.01 / 0.001mm or 0.0005 / 0.00005"	0.01 / 0.001mm or 0.0005 / 0.00005"	0.01 / 0.001mm or 0.0005 / 0.00005"
Accuracy	X = 0.01mm	X = 0.01mm	X = 0.01mm	X = 0.01mm
ver range	Z = 0.02mm	Z = 0.02mm	Z = 0.02mm	Z = 0.02mm
Taper	ISO 40	ISO 50	ISO 50	ISO 50

	TPR802	TPR1002	TPR602/400	TPR802/400
<b>Code No</b>	<b>20-2808</b>	<b>20-28010</b>	<b>20-2806-4</b>	<b>20-2808-4</b>
Range Z axis	800mm / 31"	1000mm / 39"	600mm / 23"	800mm / 31"
Range X axis	300mm / 12"	300mm / 12"	400mm / 16"	400mm / 16"
Resolution (switchable)	0.01 / 0.001mm or 0.0005 / 0.00005"	0.01 / 0.001mm or 0.0005 / 0.00005"	0.01 / 0.001mm or 0.0005 / 0.00005"	0.01 / 0.001mm or 0.0005 / 0.00005"
Accuracy	X = 0.01mm	X = 0.01mm	X = 0.01mm	X = 0.01mm
ver range	Z = 0.02mm	Z = 0.02mm	Z = 0.02mm	Z = 0.02mm
Taper	ISO 50	ISO 50	ISO 50	ISO 50

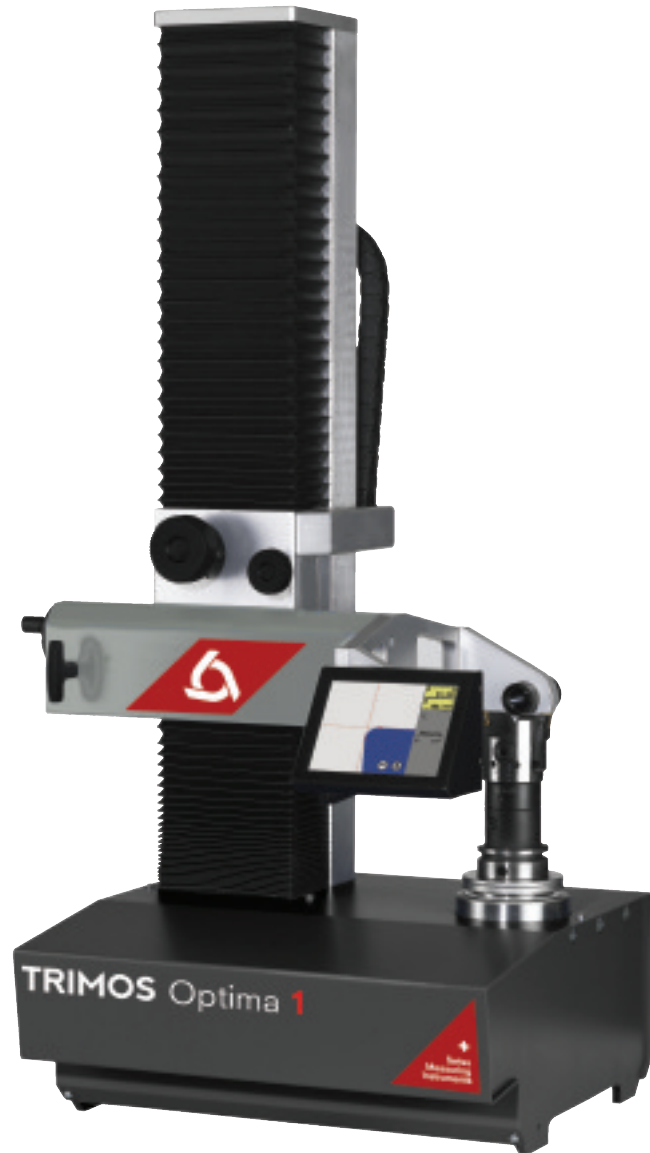
## Trimos Optima 1 Tool Presetter

Pre-loaded re-circulating ball guides on all axes and weight counterbalance ensure accurate and tireless operation. Measuring column and tool spindle are mounted on a thermally stabilised and stress-free cast-iron base. Bellows protect the guides, fine adjusting spindle and measuring system against rough workshop environments.



### Features

- Ergonomic operating elements
- Optimum layout with selective axis clamp
- Endless precise adjustment in  $\mu\text{m}$ -range
- No air connection required



### TRIMOS OPTIMA 1

Code No	Description	Range
20-P219350	Optima 1 with Dial Indicator	X = 310mm Z = 42 - 360mm
20-P2219351	Optima 1 with Dial Indicator Z500	X = 310mm Z = 82 - 500mm
20-P219350T	Optima 1 T Cam3	X = -60 /250mm Z = 42 /360mm
20-P219351T	Optima 1 T Cam3 Z500	X = 310mm Z = 82 - 500mm
20-P219350S2	Optima 1 Smart 2	X = -60 /250mm Z = 42 /360mm
20-P219350S2P	Optima 1 Smart 2 incl printer	X = -60 /250mm Z = 42 /360mm
20-P219351S2	Optima 1 Smart 2 Z500	X = 310mm Z = 82 - 500mm

## Trimos Optima Plus Tool Presetter

The new **Trimos Optima Plus Tool Presetter** is the ideal solution for the quick and precise measurement and setting of machine tools in today's competitive manufacturing environments.

The modular nature of the Optima Plus range ensures that each customer is supplied with a high-quality tool presetter exactly matching their specific needs. The available Optima Plus options include a choice of spindle pots and adaptors including ISO, VDI, HSK, a vacuum-clamping system and a choice of PCs and printers. Three-format post processor software is offered, along with extended database and point measure software modules, whilst an additional post processor is available upon request.



Swiss Precision



see p249 for wireless options

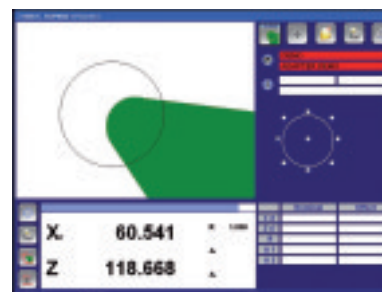
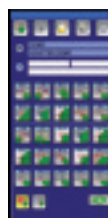
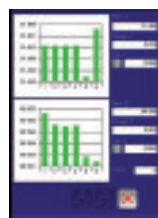
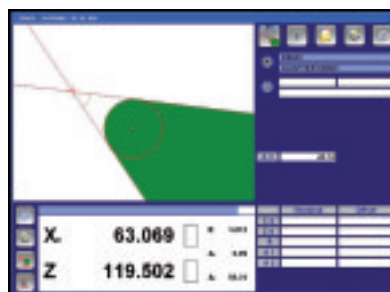


### Standard Features & Accessories

- Latest camera system technology including telemetric optics
- Patented needle bearing or vacuum spindle system (optional)
- Includes Dymo LabelWriter and light for tool inspection
- Measuring range 500 x 500mm or 500 x 700mm
- Easy to operate shop floor tool measuring software
- High quality DELL hardware system
- New  $\mu$ -motion fine adjustment
- 40x tool magnification
- Free software updates
- Calibration master
- Integrated air pressure regulator



- 17" flat screen or touch screen (optional)



Trimos Shopware tool measuring system

### TRIMOS OPTIMA PLUS

Code No	Measuring (X) mm	Measuring (Z) mm	Taper	Max concentricity error (mm)	Resolution (mm)	Interface	Weight (Kg)
20-500500P	500	500	ISO 40 or ISO 50	0.002	0.001	RS232/USB	90
20-500700P	500	700	ISO 40 or ISO 50	0.002	0.001	RS232/USB	95

Other Taper options are available