

Data Collection Software (Suitable for 32 & 64 Bit Operating Systems)

Software Wedge is an ingenious and inexpensive piece of software that allows the user to connect ANY gauge with an RS 232 output directly to a PC, laptop etc and send the instruments reading to such programs as spreadsheets, databases etc. Imported data can be manipulated, analysed etc on a users own software of choice.

Software Wedge for Windows

Standard version features:

- Supports all COM ports. Install on up to 32 serial ports on a PC for data collection from many devices simultaneously
- Data transfer as keystrokes directly into any other application program
- A powerful serial data analyser feature allows you to preview serial data and debug all serial communications problems
- Data filtering capabilities let you selectively filter out non-numeric characters from any field in your input data or ignore specific fields altogether

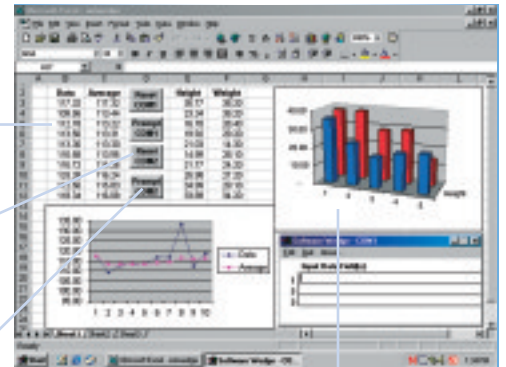
Pro version - all the features of the standard version plus:

- Extended support for 2-way I/O to give you more options for controlling serial devices
- Support up to 99 com ports simultaneously
- Support for any serial data including binary hexadecimal and octal as well as ASCII
- Thirty powerful maths and string functions including scaling, conversions, arithmetic and logical operators
- Hot key activated output strings and hot key control of all WinWedge pro features
- More advanced data filtering option

Input serial data from any instrument directly into your application programs in real time.

Create buttons or macros in your application that perform Serial I/O functions with the Pro version.

Send out commands or data to control your instruments directly.



Create charts or graphs in your application that automatically update with real-time data from your serial devices.

SOFTWARE WEDGE

Code No	Description
30-1522	Software Wedge-Standard (32 & 64 Bit)
30-1524	Software Wedge-Pro (32 & 64 Bit)

Sylvac Sylconnect



Software allowing the connection of 16 Sylvac handtools to a computer by USB cable. No specific interface is required! The instruments can be directly connected to the USB port or via USB-Hub available on the market.

Automatic recognition and USB port setting for every new connected instrument. A digital or analog window is automatically created for each instrument. Jpeg picture import function and window value resizing. Direct values export to Excel worksheet. Possibility to connect one or many USB footpedals to drive different instruments.



SYLCONNECT

Code No	Description
30-981-7160	Sylconnect



Multi channels screen with tolerances displayed in colour



Automatic instrument detection and configuration window



Tolerances setting



Multi channels screen displayed in analog mode

Gauge Management & Calibration Software

The inspired **QMSOFT (Quality Management Software)** system is a comprehensive, user-friendly gauge management software programme, enabling the efficient administration of a company's measuring instrument inventory, or the effective management of commercial calibration laboratory gauge throughput. Add on individual modules relating to specific gauge categories render this powerful software one of the most comprehensive and flexible currently available.

The screenshot displays the QMSOFT software interface. The main window shows a table of gauge inventory with columns for Type, Identify number, Nominal size, Status, Date of last inspection, and Date of next inspec. The table lists various gauges such as Caliper, Dial gauge (ANSI standard), and various plug gauges. A detailed view of a selected gauge is shown on the right, displaying its nominal size (25.0000 mm / 25.1000 mm), standard (G1: 969:1902), and upper and lower deviations (0.00 µm). Below the detailed view, there is an image of the gauge.

Type	Identify number	Nominal size	Status	Date of last inspection	Date of next inspec
Caliper	0812	150.0 mm	Usable	20/09/2004	
Dial gauge (ANSI standard)	DG_Ansi_12333	0.0000 - 0.5000 mm	Usable	20/07/2005	
Hand micrometer	HM_31494	0.4 mm - 0.4 mm	DO NOT USE	04/10/2004	
GO / NOGO plug gauge	0818	20H7	DO NOT USE	13/10/2004	
Dial gauge (DIN standard)	00009	0.000 - 10.000 mm	DO NOT USE just calibrated		
External micrometer	295	25.50 - 50.00 mm	Swapped	21/03/2002	30/12/1998
GO / NOGO ring gauge	1236	20.7	Retrieved use	11/07/2005	12/01/2005
Pin gauge	0009_Test	3 - 20.8 µm	DO NOT USE	09/01/2002	09/01/2002
Setting plug (analogous DIN GDI)	FL3_sure12	40.0000 mm	Usable	13/10/2004	10/10/2004
GO / NOGO plug gauge	0610_1748	25.0000 mm / 25.1000 mm	Usable	13/10/2004	06/12/2004
GO / NOGO plani plug gauge for minor diameter	0809	9043x1.6 mm	Usable	13/10/2004	22/12/2004
GO / NOGO thread plug gauge for Steel conda	2222_Test	M 11	Usable	13/10/2004	02/01/2005
NOGO plug gauge	0410_1236	40.0	Usable	13/10/2004	05/01/2005
Internal micrometer	045_1765	25.00 - 50.00 mm	Usable	22/09/2004	22/01/2005
Steel square	STW_0023	500 x 270	Usable	22/09/2004	23/03/2005
GO thread ring gauge	08082	M 12x1.75-6g	Usable	13/10/2004	10/04/2005
GO thread ring gauge	Test_G.P._1023	M 12x1.75-6g	Swapped	05/07/2004	05/07/2005
Torque tool	0890_095	100 - 1000 Nm	Usable	20/09/2004	20/09/2005
GO / NOGO thread plug gauge	0234	M 40x4.5-9H	Usable	13/10/2004	20/09/2005
NOGO snap gauge	045_01726	40.7	Usable	13/10/2004	20/09/2005
Measuring bar	045_3414	3000 mm	DO NOT USE	23/09/2004	20/09/2005
End edge	045_1765	500.0 mm	Usable	20/09/2004	20/09/2005
Straight edge	FL_3492	500.0 mm	Usable	20/09/2004	20/09/2005
Dial gauge (DIN standard)	00132	0.000 - 10.000 mm	Usable	22/09/2004	22/09/2005
Screen thread micrometer	0710	0.00 - 25.00 mm	Usable	04/10/2004	04/10/2005
NO GO thread ring gauge	045.P_34952	M 2x1.4-6g	Usable	13/10/2004	05/10/2005
Dial gauge (ANSI standard)	0009_120004	0.0 - 3.0 mm	Gauge being repaired	02/10/2004	05/10/2005
External micrometer	08237	25.00 - 50.00 mm	Usable	09/10/2004	09/10/2005
External micrometer with block levels	083	100.00 - 200.00 mm	Usable	09/10/2004	09/10/2005
Master ring acc. to BS (BS4464 / BS4465)	045_2346	40.0000 mm	Usable	13/10/2004	10/10/2005
GO ring gauge	0820	20.7	Usable	13/10/2004	10/10/2005
Pin gauge	0812	380.0 Grad	Usable	13/10/2004	10/10/2005
Depth micrometer	08076	0.00 - 25.00 mm	Usable	20/09/2005	20/02/2006
GO / NOGO plug gauge acc. to ANSI	0009_17008	1.00000 " / 1.00000 "	Usable	20/07/2005	20/07/2006

QMSOFT Main Features

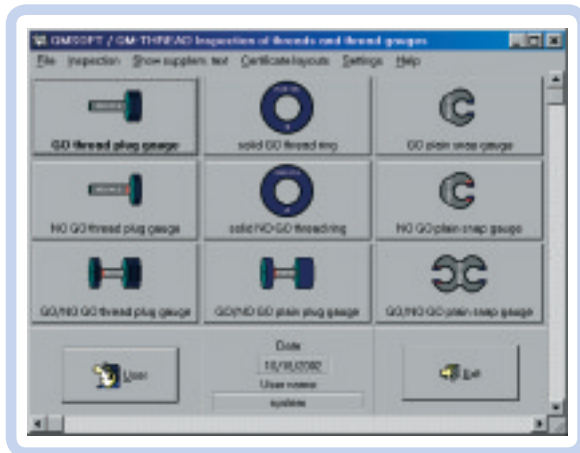
- Gauge management and gauge inspection are integrated into the system with equal importance
- Specially developed modules make possible the calibration of all common gauges using any national, international or user defined standard. It is therefore not necessary to define an inspection procedure for each gauge type
- Extensive support for directly connected measuring devices including Trimos & Sylvac calibration instruments
- All normal sizes and tolerances for gauges are calculated by the program (with relevant modules installed)
- Inspection certificates may be customised for individual presentation saved as html, doc or pdf files

QM-MANAG - The Gauge Management system

Code No 20-3250

QM-MANAG provides all the functions to manage the complete inventory of measuring tools and gauges. It also allows the creation of identification cards, search and reminder lists, as well as histories of all measuring tools and gauges.

The QMSOFT modules allow the operator to calibrate all types of measuring instruments against major international standards or to create and use more practical in-house standards for each gauge within the database. The easy to use, modular nature of QMSOFT allows the user to customise the software to match their own requirements.



QM-PLAIN - plain gauge inspection

Code No 20-3251

QM-PLAIN supports the inspection of master rings and ring gauges, plug gauges and snap gauges. Using the selected gauge type and the nominal value provided (e.g. 2H7), the program calculates the gauge tolerances.

Includes DIN, ANSI/ASME and British Standards.

QM-THREAD - thread gauge inspection

Code No 20-3252

QM-THREAD calculates the expected size over wires or balls and the pitch diameter depending on the measurement method. The program calculates the nominal sizes and tolerances for varied international standards including:

- ISO metric threads BS 3643
- Unified threads to ANSI / ASME
- Pipe threads to BS 2779
- Steel Conduit threads to DIN 40431
- Trapezoidal threads to DIN 103
- Whitworth threads BS 84:1956
- Helicoil threads to BOELLHOFF standard
- Unified threads to BS 1580
- Unified Helicoil to BOELLHOFF standard
- Buttress threads to DIN 513
- MJ threads to DIN ISO 5855
- NPSM pipe threads to ANSI / ASME
- Threads for valves to DIN 7756 / ETRTO V.7
- ACME screw threads to ASME / ANSI
- STUB ACME screw threads to ASME / ANSI
- Buttress inch screw threads 7°/45° to ANSI
- Thread gauges according to factory standard
- Plus many others

QM-DIAL - dial gauge inspection

Code No 20-3255

QM-DIAL supports the inspection of dial gauges, dial indicators and dial test indicators. Standards supported include:

- Dial gauges to DIN 878
- Dial indicators to DIN 879
- Dial test indicators to DIN 227
- Dial gauges to BS 907
- Dial indicators to BS 2795

Additional modules include:

QM-CALIP - Code No 20-3256 - inspection of calipers

QM-MICRO - Code No 20-3258 - inspection of micrometers

QM-PINS - Code No 20-3257 - inspection of pin gauges

QM-EMP4W - Code No 20-3261 - inspection of gauge blocks

QM-RULE - Code No 20-3259 - inspection of rules

QM-TORQ - Code No 20-3249 - inspection of torque gauges

QM-TTAP - Code No 20-3248 - inspection of tapered threads