

## Granite Tables

Completely stress free after millions of years of natural stress relieving, high rigidity, corrosion free and non-magnetic, just some of the attributes that makes granite ideal for inspection purposes and anywhere an accurate stable datum is required.

**Granite Surface Tables** are manufactured to BS817:1988 and are finished to the exacting tolerances required. Every table is supplied complete with a UKAS calibration certificate and a box section frame with adjusting supports. Tapped inserts and covers can also be supplied as extra.



### GRANITE TABLES

Sizes (mm)	Grade 0	Grade 1	Grade 2
900 x 600 (3' x 2')	10-10001	10-10002	10-10003
1000 x 1000 (3' x 3')	10-10005	10-10006	10-10007
1200 x 900 (4' x 3')	10-10013	10-10014	10-10015
2000 x 1200 (6' x 4')	10-10029	10-10030	10-10031
2400 x 1200 (8' x 4')	10-10033	10-10034	10-10035

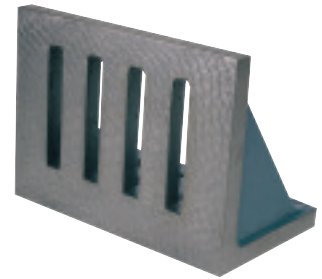
### SURFACE PLATES

Sizes (mm)	Grade 0	Grade 1	Grade 2
300 x 300 (12 x 12")	10-10073	10-10074	10-10075
450 x 300 (18 x 12")	10-10077	10-10078	10-10079
450 x 450 (18 x 18")	10-10081	10-10082	10-10083
600 x 450 (24 x 18")	10-10085	10-10086	10-10087
600 x 600 (24 x 24")	10-10089	10-10090	10-10091
900 x 600 (36 x 24")	10-10097	10-10098	10-10099

Surface plates are similar to the Tables in both grade and finish and provide a highly accurate datum surface for smaller inspection departments. Each Plate is supplied with UKAS certificates but without a support frame. Tapped inserts and covers can be supplied at extra cost.

## Bowers Angle Plates

Manufactured from close grained cast iron, our high quality **Angle Plates** are supplied in their Grade A or B and are supplied with UKAS calibration certification as standard.



### ANGLE PLATES

Sizes (ins)	Grade A Webb	Grade B Webb
6 x 5 x 4	10-10319	10-10321
8 x 6 x 5	10-10323	10-10325
9 x 7 x 6	10-10327	10-10329
12 x 9 x 9	10-10335	0-10337
18 x 12 x 9	10-10343	10-10345
24 x 18 x 18	10-10347	10-10348

### BOX ANGLE PLATES

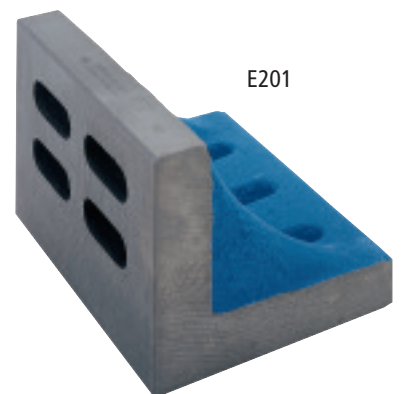
Sizes (ins)	Grade A Webb	Grade B Webb
6 x 5 x 4.5	10-10351	10-10352
9 x 7 x 6	10-10353	10-10354
12 x 10 x 9	10-10355	10-10356



## Moore & Wright Angle Plates

Complies with: BS5535 Grade B

- Manufactured from close grained cast iron
- Heat stabilised to prevent distortion
- Machined to tolerance on all four edges and two faces (four faces on open end version)



E201



E301

### METRIC / IMPERIAL ANGLE PLATES

Code No.	Type	Length	Width	Height
E200	Webbed	100mm / 3.94"	60mm / 2.36"	80mm / 3.15"
E202	Webbed	160mm / 6.30"	100mm / 3.94"	125mm / 4.92"
E204	Webbed	200mm / 7.87"	125mm / 4.92"	160mm / 6.30"
E206	Webbed	250mm / 9.84"	160mm / 6.30"	200mm / 7.87"
E207	Webbed	315mm / 12.40"	200mm / 7.87"	250mm / 9.84"
E301	Open End	125mm / 4.92"	80mm / 3.15"	100mm / 3.94"
E302	Open End	160mm / 6.30"	100mm / 3.94"	125mm / 4.92"
E304	Open End	200mm / 7.87"	125mm / 4.92"	160mm / 6.30"
E306	Open End	250mm / 9.84"	160mm / 6.30"	200mm / 7.87"
E307	Open End	315mm / 12.40"	200mm / 7.87"	250mm / 9.84"

## Moore & Wright Vee Blocks & Clamps

### Features

#### 230 General Workshop grade

- Manufactured from close grained cast iron
- Supplied in matched and numbered pairs
- One steel clamp and screw supplied per pair

#### 231 Precision Vee Blocks

- Manufactured to BS3731 grade B
- Manufactured from case hardened and ground mild steel
- Supplied in matched pairs only
- Two malleable iron clamps with steel screws supplied with each pair of blocks



### VEE BLOCKS & CLAMPS

Code No	Accuracy - Square & Parallel to within:	Vee Range	Width	Length	Height
230	0.05mm / 0.020"	40mm 1 1/2"	40mm 1 1/2"	50mm 2"	40mm 1 1/2"
231	0.01mm / 0.004"	25mm 1"	32mm 1 1/4"	42mm 1 5/8"	32mm 1 1/4"
23001	Spare Clamp and Screw for 230				

## Moore & Wright Vee Blocks Standard Pairs

### Features

- Supplied in matched and numbered pairs only
- Manufactured from close grained cast iron
- Ground faces

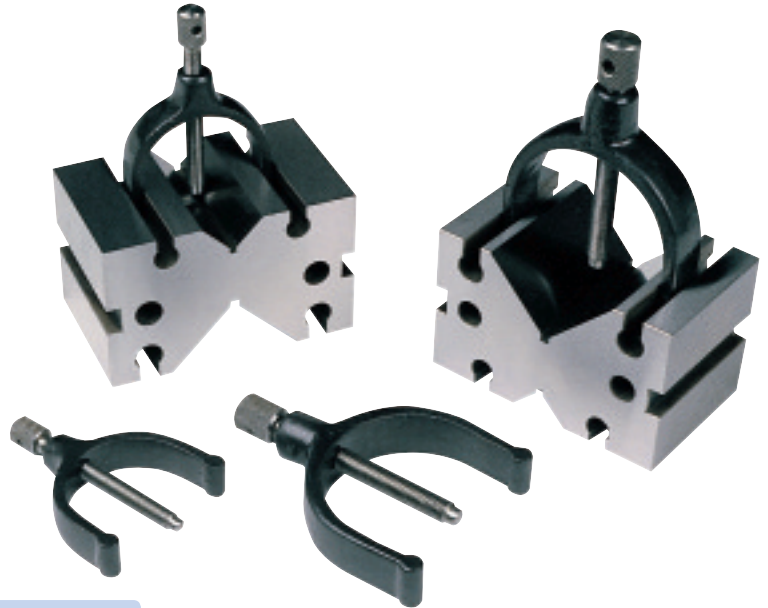


### VEE BLOCKS STANDARD PAIRS

Code No	Accuracy - Square & Parallel to within:	Max. Vee Range	Width	Length	Height
211	0.04mm / 0.0015"	63mm / 2.48"	80mm / 3.15"	35mm / 1.38"	60mm / 2.36"
212	0.04mm / 0.0015"	80mm / 3.15"	100mm / 3.94"	40mm / 1.57"	75mm / 2.95"
213	0.05mm / 0.0020"	100mm / 3.94"	130mm / 5.12"	45mm / 1.77"	90mm / 3.54"
214	0.05mm / 0.0020"	125mm / 4.92"	150mm / 5.90"	50mm / 1.97"	100mm / 3.94"
215	0.06mm / 0.0025"	160mm / 6.30"	180mm / 7.09"	60mm / 2.36"	130mm / 5.12"
216	0.06mm / 0.0025"	200mm / 7.87"	220mm / 8.66"	70mm / 2.76"	160mm / 6.30"

## Bowers Vee Blocks

Used for supporting components while machining, vee blocks are a valuable workholding aid.



### Steel Vee Blocks - Grade A

Supplied in matched pairs complete with clamps.  
Manufactured to BS3731:1971

#### STEEL VEE BLOCKS - GRADE A

Code No	Width	Length	Height	Range
10-10363	2.500"	1.625"	1.625"	1.375"
10-10364	3.562"	2.250"	2.250"	2.125"
10-10365	4.250"	3.000"	3.000"	2.625"
10-10366	6.000"	4.000"	4.000"	4.125"

## Engineers Parallels

Manufactured to BS906-1:1972

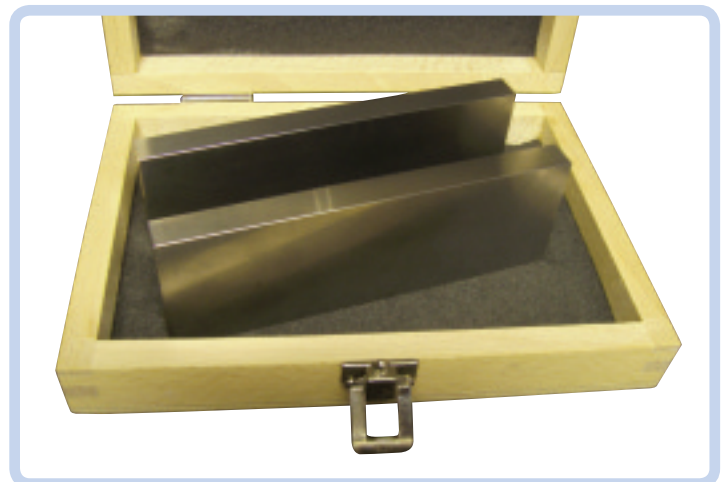
#### ENGINEERS PARALLELS (PAIRS) METRIC

Grade A Code No	Grade B Code No	Size
10-P100MA	10-P100MB	5 x 10 x 100mm
10-P125MA	10-P125MB	10 x 20 x 125mm
10-P150MA	10-P150MB	15 x 30 x 150mm
10-P200MA	10-P200MB	20 x 40 x 200mm
10-P250MA	10-P250MB	25 x 50 x 250mm
10-P300MA	10-P300MB	30 x 60 x 300mm
10-P350MA*	10-P350MB*	40 x 80 x 350mm
N/A	10-P400MB*	50 x 100 x 400mm

Manufactured to BS906-2:1972

#### ENGINEERS PARALLELS (PAIRS) IMPERIAL

Grade A Code No	Grade B Code No	Size
10-P100IA	10-P100IB	1/4" x 1/2" x 4"
10-P125IA	10-P125IB	3/8" x 3/4" x 6"
10-P150IA	10-P150IB	1/2" x 1" x 6"
10-P200IA	10-P200IB	3/4" x 1 1/2" x 8"
10-P250IA	10-P250IB	1" x 2" x 10"
10-P300IA	10-P300IB	1" x 2" x 12"
10-P2503IA*	10-P350IB*	1 1/2" x 3" x 10"
10-P3003IA*	10-P350IB*	1 1/2" x 3" x 12"



Parallels are hardened and ground steel and supplied in matched pairs  
Parallels will be supplied in rigid case / lid boxes wire stitched except for parallels marked \*  
Wooden boxes are available at extra cost  
UKAS Certification is available at extra cost

## Bowers Slip Gauges

A full range of different set compositions, grades and materials all manufactured to BS 4311:1993 or DIN861. Popular sizes are available in either Imperial or Metric sets and can be made from Steel, Carbide or Ceramic. Individual sizes also available.

Slip Gauges are supplied either in sets or individually.

Sets are supplied complete in a fitted wooden box with sizes marked. Each set is supplied complete with a calibration certificate of accuracy.

Steel slips must be cleaned after use to avoid corrosion.

Due to their extra hardness, carbide slips can last up to 5 or 6 times longer and do not suffer from the same potential corrosion problems as their steel counterparts.



### METRIC SETS IN STEEL - ISO: 3650 - COMPLETE WITH UKAS

Set No.	Grade 0	Grade 1	Grade 2
M112 (112 pieces)	16-1120	16-1121	16-1122
M88 (88 pieces)	16-1880	16-1881	16-1882
M47 (47 pieces)	16-1470	16-1471	16-1472
M8 (8 pieces)	16-1080	16-1081	16-1082

### METRIC SETS IN CARBIDE - ISO: 3650 - COMPLETE WITH UKAS

Set No.	Grade 0	Grade 1	Grade 2
M112 (112 pieces)	16-2120	16-2121	16-2122
M88 (88 pieces)	16-2880	16-2881	16-2882
M47 (47 pieces)	16-2470	16-2471	16-2472
M8 (8 pieces)	16-2080	16-2081	16-2082

Imperial Sets available - Please contact the sales office

## Combination Length Bar Sets

Combination Length Bars are made from the same high grade steel as the gauge blocks. These length bars are manufactured to BS 1790 (Imperial) and BS 5317 (Metric). The bars have a round section, are hardened to 64 Rc and are precision lapped. Reference and calibration length bars are produced with plain ends and Inspection and Workshop grades have internal threaded holes in their end faces. This helps with the assembly of a combination of bars. A number of standard sets are available as well as individual sizes.

### LENGTH BAR SETS SUPPLIED IN WOODEN CASE

Sizes	Code No:				
	MB8	MB9	MB10	MB11	MB14
10mm	✓	✓	✓		
20mm	✓	✓	✓		
25mm				✓	✓ (x3)
40mm	✓	✓	✓		
50mm				✓	✓
60mm	✓	✓	✓		
75mm				✓	✓
80mm	✓	✓	✓		
100mm	✓	✓	✓	✓	✓
125mm				✓	✓
150mm				✓	✓
175mm				✓	✓
200mm	✓	✓	✓	✓	✓ (x2)
300mm	✓	✓	✓		
375mm				✓	✓
400mm		✓	✓		
575mm				✓	✓
600mm			✓		
775mm				✓	✓



## Moore & Wright Steel Gauge Blocks 700 Series

### Features

- Made from high quality stress relieved alloy steel
- Hardened to HV820 (HRC65)
- Excellent rigidity
- Size and serial number are engraved on each individual gauge block
- Available in 2 grades
- All sets have a MOORE & WRIGHT certificate
- All sets can be issued with a UKAS certificate at extra cost

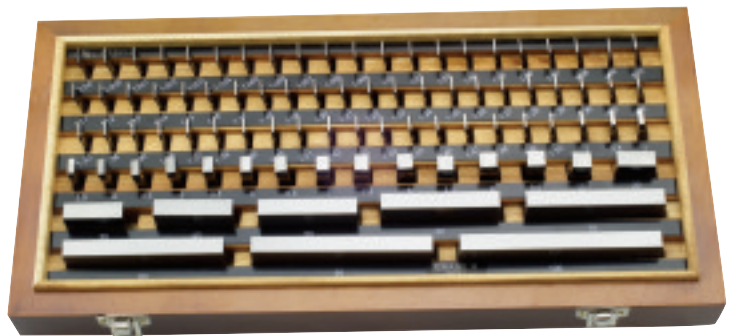


## Carbide Gauge Blocks 710 Series

### Features

Standard: DIN 861

- Made from solid carbide with high precision
- Service life is up to 6 times that of steel
- Excellent wringability due to micro polished surfaces
- Every gauge block has its own serial number
- Available in 3 grades
  - Grade 0 for calibration
  - Grade 1 for inspection
  - Grade 2 for workshop
- All sets have MOORE & WRIGHT certificate
- All sets can be issued with UKAS certificate at extra cost



### STEEL AND CARBIDE BLOCK SET CONFIGURATION

No. blocks	Nominal size	Qty	Step (mm)	No. blocks	Nominal size	Qty	Step (mm)	No. blocks	Nominal size	Qty	Step (mm)	No. blocks	Nominal size	Qty	Step (mm)
103	1.005	1		47	1.005	1		87	1.001-1.009	9	0.001	32	1.005	1	
	1.01-1.49	49	0.01		1.01-1.09	9	0.01		1.01-1.49	49	0.01		1.01-1.09	9	0.01
	0.50-24.50	49	0.5		1.10-1.90	9	0.1		0.50-9.50	19	0.5		1.10-1.90	9	0.1
	25.0-100.0	4	25		1.0-24.0	24	1		10.0-100.0	10	10		10.0-30.0	3	10
					25.0-100.0	4	25						60.0	1	

### STEEL GAUGE BLOCK SETS - 700 SERIES

Code No	No. of Blocks	Grade
MW700-02	103	1
MW700-03	103	2
MW700-05	87	1
MW700-06	87	2
MW700-08	47	1
MW700-09	47	2
MW700-11	32	1
MW700-12	32	2

### CARBIDE GAUGE BLOCK SETS - 710 SERIES

Code No	No. of Blocks	Grade
MW710-01	103	0
MW710-02	103	1
MW710-03	103	2
MW710-04	87	0
MW710-05	87	1
MW710-06	87	2
MW710-07	47	0
MW710-08	47	1
MW710-09	47	2
MW710-10	32	0
MW710-11	32	1
MW710-12	32	2

## Mike-Check M10 Set 715 Series

### Features

Standard: DIN 861

- For the inspection of micrometers according to DIN 863
- Grade 0 accuracy
- Nominal sizes (mm): 2.5, 5.1, 7.7, 10.3, 12.9, 15.0, 17.6, 20.2, 22.8, 25.0
- Includes parallel optical flat 30mm dia. x 12mm
- UKAS calibration available at extra cost



### MIKE-CHECK M10

Code No	Description
MW715-01	10 Piece Micrometer Gauge Block Set plus Optical Flat

## Bore Gauge Setting Master Kit 720 Series

### Features

- Bore Gauge Setting Master Kit for accurately setting any 2 point bore gauge up to 160mm in diameter to an accuracy of 0.01mm
- Setting master and 33 piece metric gauge block set supplied in aluminium case

### Setting Device

- Internal range 160mm
- Depth range 25mm
- Centraliser width 70mm
- Quick-release holder for fast adjustment

### Gauge Block Set

- Accuracy to DIN 861, Grade2
- 33 piece metric steel set
- Includes MOORE & WRIGHT certificate



### BORE GAUGE SETTING MASTER KIT

Code No	Description
MW720-01	Bore Gauge Setting Master Kit

## Bowers Steel Rules and Tapes

These Graduated Rules are manufactured out of spring steel.



### Graduated Steel Rules

Manufactured to DIN 866/2 these round ended steel rules start their graduations on the left edge. The top of the rule is graduated in inch readings 1/16", 1/32" and 1/64". The bottom is graduated in metric readings of 1/2mm and 1/1mm.



### Graduated Steel Straight Edge

Manufactured to DIN 866/1 the gauging surfaces have been precision ground. The clear and easy to read metric graduations start 5mm in from the ends.



### Circumference Tapes

Tapes measure both circumference and external diameters on the vernier cover plate. Manufactured to DIN 866/2 and read to 0.1mm.

#### GRADUATED STEEL RULES

Code No	Sizes
80-460-241	150 x 13 x 0.5mm
80-460-243	250 x 15 x 0.5mm
80-460-247	300 x 30 x 1mm
80-460-248	500 x 30 x 1mm
80-460-249	1000 x 30 x 1mm
80-460-250	1500 x 30 x 1mm
80-460-251	2000 x 30 x 1mm
80-460-252	3000 x 30 x 1mm

#### GRADUATED STEEL STRAIGHT EDGE

Code No	Sizes
80-451-101	500 x 30 x 6mm
80-451-102	1000 x 40 x 8mm
80-451-103	1500 x 40 x 8mm
80-451-104	2000 x 50 x 10mm
80-451-105	3000 x 50 x 10mm

#### CIRCUMFERENCE TAPES

Code No	Circumference	Diameter
80-458-102	60-950mm	20-300mm
80-458-103	940-2200mm	300-700mm
80-458-104	2190-3460mm	700-1100mm
80-458-105	3450-4720mm	1100-1500mm
80-458-106	4710-5980mm	1500-1900mm
80-458-107	5960-7230mm	1900-2300mm
80-458-108	7220-8500mm	2300-2700mm
80-458-109	8490-9760mm	2700-3100mm
80-458-110	9730-11010mm	3100-3500mm

## Moore & Wright Engineers' Rules

### Features

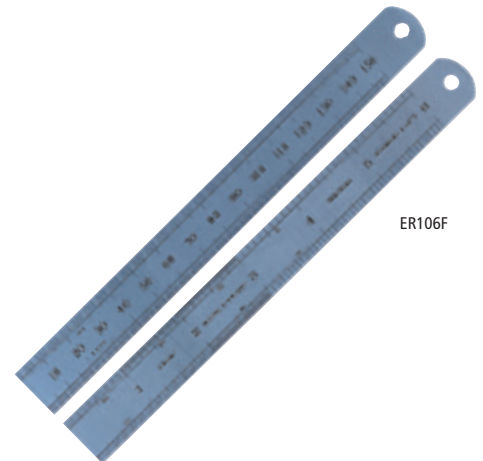
- Made from fine quality steel which has been hardened and tempered to provide the ideal balance between flexibility and durability
- 'D' end with hanging hole
- Satin chrome anti-glare finish
- Permanent black high definition scale markings

#### METRIC SCALES ONLY: TWO SIDES, FOUR EDGES

Code No	Rule length	Rule width	Rule thick	Front Face Graduations	Rear Face Graduations	PK Qty
ER306F	150mm	19.0mm	0.4mm	0.5mm, 1.0mm	0.5mm, 1.0mm	1
ER312	300mm	25.0mm	1.0mm	0.5mm, 1.0mm	0.5mm, 1.0mm	1

#### METRIC / IMPERIAL SCALES: TWO SIDES, FOUR EDGES

Code No	Rule length	Rule width	Rule thick	Front Face Graduations	Rear Face Graduations	PK Qty
ER106F	150mm	19.0mm	0.4mm	1/16th, 1/32nd, 1/64th	0.5mm, 1.0mm	1
ER206F	/ 6"	12.5mm	0.4mm		0.5mm, 1.0mm	1
ER112	300mm	25.0mm	1.0mm	1/10th, 1/20th, 1/50th	0.5mm, 1.0mm	1
ER212	/ 12"	12.5mm	0.4mm		0.5mm, 1.0mm	1
ER424	600mm / 24"	25.0mm	1.0mm	1/100th of an inch	0.5mm, 1.0mm	1



ER106F

## Bowers Straight Edges & Parallels

Manufactured out of spring steel these straight edges are precision ground.



### Steel Straight Edge

Manufactured to DIN 874/1. Up to 2000mm these straight edges are rectangular section. From 2500mm they are I-section with two grip slots.

Straightness:  $4 + \frac{\text{Length (mm)}}{60} = \mu\text{m}$ .

### STEEL STRAIGHT EDGE

Code No	Sizes
80-465-101	500 x 40 x 8mm
80-465-102	750 x 50 x 10mm
80-465-103	1000 x 50 x 10mm
80-465-104	1500 x 60 x 12mm
80-465-105	2000 x 70 x 14mm
80-465-106	2500 x 80 x 15mm
80-465-107	3000 x 100 x 16mm

## Moore & Wright Engineers' Straight Edges

### Standard features include:

- Manufactured from high quality hardened steel
- Available with either square or one 30° bevelled edge
- Finish ground on both sides and edges
- Clearly marked supporting points on 900mm size

### Light Section Straight Edges:

- Manufactured to BS5204 Grade B
- Suitable for general workshop use

310-12



310-36

### METRIC / IMPERIAL LIGHT SECTION (GRADE B) STRAIGHT EDGES

Length	Width	Thickness	Square Edge	Bevel Edge
305mm / 12"	32mm / 1 1/4"	4.76mm / 3/16"	310-12	310B-12
610mm / 24"	41mm / 1 5/8"	6.35mm / 1/4"	310-24	310B-24
914mm / 36"	51mm / 2"	7.94mm / 5/16"	310-36	310B-36

### Heavy Section features:

- Manufactured to BS5204 Grade A
- Suitable for precision, inspection and workshop use



312B-36

### METRIC HEAVY SECTION (GRADE A) STRAIGHT EDGES

Length	Width	Thickness	Square Edge	Bevel Edge
305mm / 12"	41mm / 1 5/8"	6.35mm / 1/4"	312-12	312B-12
610mm / 24"	51mm / 2"	7.94mm / 5/16"	312-24	312B-24
914mm / 36"	64mm / 2 1/2"	9.53mm / 3/8"	312-36	312B-36

### TOLERANCES TABLES FOR STRAIGHT EDGES

GRADE B - 310 SERIES			Combined Tolerance of flatness & Parallelism of Side Faces
Nominal Length	Straightness of Working Faces	Parallelism of Working Faces	
12"	0.00039"	0.00039"	0.00276"
24"	0.00047"	0.00047"	0.00315"
36"	0.00055"	0.00055"	0.00354"

### TOLERANCES TABLES FOR STRAIGHT EDGES

GRADE A - 312 SERIES			Combined Tolerance of flatness & Parallelism of Side Faces
Nominal Length	Straightness of Working Faces	Parallelism of Working Faces	
12"	0.00020"	0.00020"	0.00197"
12"	0.00020"	0.00020"	0.00197"
36"	0.00028"	0.00028"	0.00236"

## Carbide Tipped Scriber

### Features

- Pocket clip
- Pearl chrome finish
- Robust design



MWSC-001XR



MWSC-002R

### CARBIDE TIPPED SCRIBER

Code No	Description	Pk Qty
SCT-001XR	Retail Pack, replaceable carbide tipped scriber	1
SCT-002R	Retail Pack, fixed carbide tipped scriber	1

## Telescopic Gauges 315 Series

### Features

- For quick inside measurement and determination of inside diameters
- Spring loaded plunger that expands in the bore or groove
- Satin chromed body
- With auto extension and direct locking
- Measuring faces are hardened and micro-lapped



### TELESCOPIC GAUGE SETS

Code No	Range	Quantity
MW315-01	8-150mm	6-pieces

### INDIVIDUAL TELESCOPIC GAUGES

Code No	Range
MW315-011	8-12.7mm
MW315-012	12.7-19mm
MW315-013	19-32mm
MW315-014	32-54mm
MW315-015	54-90mm
MW315-016	90-150mm